

# FLightT 3000

*The solution to the automatic laser diode characterization and test*

FLightT3000 is an industrial Automatic Test Equipment for laser diodes test and characterization.

The equipment performs three basic tests:

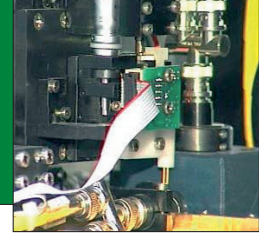
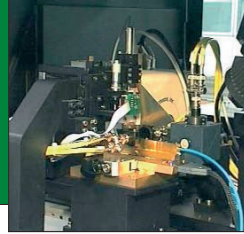
- L-I-V (Light-Current-Voltage)
- Far Field (vertical and horizontal)
- Spectrum Analysis

Both bar and CoS (Chip on Submount) types of components are supported.

The automatic test sequence is easily defined by the operator. For specific needs, tests can also be run manually.

The chuck temperature is constantly controlled by TEC's over the whole test execution, thus assuring high repeatability and stability of the results.

The specific design meets the needs of high volume production with reduced footprint. Alfautomazione long experience in the automatic functional testing for industrial fields stays behind the accurate design of this highly flexible equipment. The control hardware and the software rely on de-facto standards: PXI, NI TestStand® and NI LabView®.



## Features & Benefits

- Automated Execution of the Characterization Sequence
- Up to 8 Bars and 32 CoS per Run
- Industrial Equipment for High Volume Production
- Controlled Temperature of Carriers
- Statistic and Maintenance Software

 **Alfautomazione**

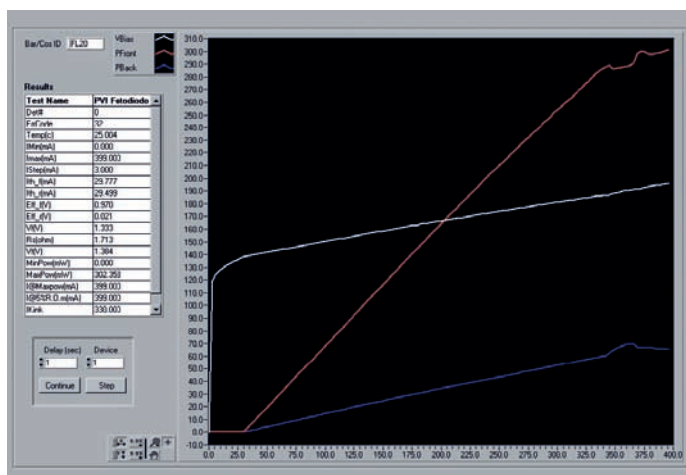
[www.alfautomazione.com](http://www.alfautomazione.com)

## ■ CUSTOMIZED SOLUTIONS ON STANDARD PLATFORM

**FLight3000** is a very flexible platform that allows easy customizations based on the Customer's requirements. Either the type of measurements and the level of accuracy may be selected in order to meet both the Customer's technical and economical expectations, through the use of several sets of market available instruments.

## ■ SOFTWARE FLEXIBILITY

Besides hardware flexibility, **FLight3000** provides a wide range of software configurations that can be customized according to the Customer's production test processes. The software environment of **FLight3000** is based on the NI TestStand® and NI LabView® platforms.



Light-Current-Voltage curves

## ■ AVAILABLE FUNCTIONS

- Hardware setup
- Instrument calibration
- Vision for device alignment
- Automated test sequence setup
- Direct axis control
- Manual control of the instrumentation
- Automatic report generation
- Maintenance software and advanced diagnostic

## ■ INNOVATIVE ASSEMBLY AND TEST SOLUTIONS FOR A DYNAMIC WORLD

Alfautomazione manufactures Functional Test Equipment and Assembly Systems for Optoelectronics, Automotive, Consumer Goods and Telecom industries.

Alfautomazione solutions for Optoelectronics include **fiber alignment, component assembly, laser characterization**, active/passive component test and burn-in.

Shop floor requirements represent the guidelines for Alfautomazione equipment design: high volumes and throughput, reliability, measurement accuracy and repeatability, rugged design.

The choice of long life components and the specific software for **guided preventive maintenance**, ensure low maintenance needs.

## World Wide Service and Support

Alfautomazione main customers are multinational corporations and our assembly/test systems are installed around the world.

We offer pre- and post-sales support and service from our headquarters in Italy and from our strategically located Sales and Service field offices.

**Alfautomazione**



Via Cadore, 21  
20035 Lissone (MI) Italy  
ph. +39 039 2435.1  
[www.alfautomazione.com](http://www.alfautomazione.com)  
[sales@alfautomazione.com](mailto:sales@alfautomazione.com)  
[service@alfautomazione.com](mailto:service@alfautomazione.com)

**alfamation** Schaumburg, IL - USA  
[www.alfamationusa.com](http://www.alfamationusa.com)  
[service@alfamationusa.com](mailto:service@alfamationusa.com)

**Asian Pacific Service Centre** Shenzhen - China  
[service@alfamationusa.com](mailto:service@alfamationusa.com)

Selected partner of



Authorized Agent/Distributor