

# HFT3000

## PXI Functional Test Station

The HFT3000 PXI Functional Test Station is an integrated system that can be easily configured to fit a wide range of functional test applications (digital, mixed signal or pure analog tasks).

Based on a PXI measurement core, the system can be equipped with the state-of-art measurement hardware such as digital multi-meters, digitizers, arbitrary waveform generators and digital pattern generators.

Moreover the HFT3000 can accommodate a very flexible matrix and multiplexer design ranging from ultra-high density signal matrix to high power matrix and RF multiplexing. The system layout has been designed to integrate the PXI rack just behind the receiver pins for the best signal integrity and is available in single or dual module configuration.

### ■ APPLICATION AREAS

- Digital, Mixed Signal and Analog
- End of line Functional Test
- Run-in Test

### ■ FUNCTIONS

- DUT dual-stage pressing
- General purpose high performance receiver interface
- Wireless fixture design available
- Wide range of analog measurement capabilities
- Digital waveform/pattern generation



## Features & Benefits

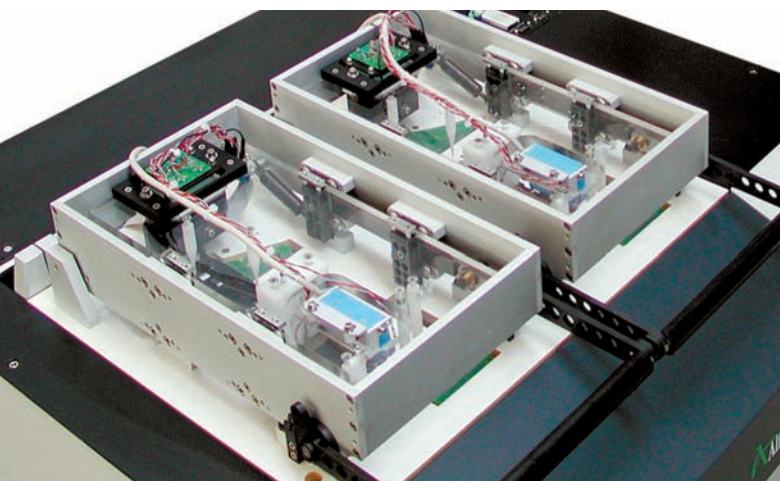
- Ergonomic design with optimized footprint and integration
- High performance off-the-shelf modular instrumentation
- Based upon market standards like PXI and NI TestStand® and latest Virtual Instrumentation generation
- Standardized platform for global deployment
- CE, UL and CSA compliant

 Alfautomazione

[www.alfautomazione.com](http://www.alfautomazione.com)

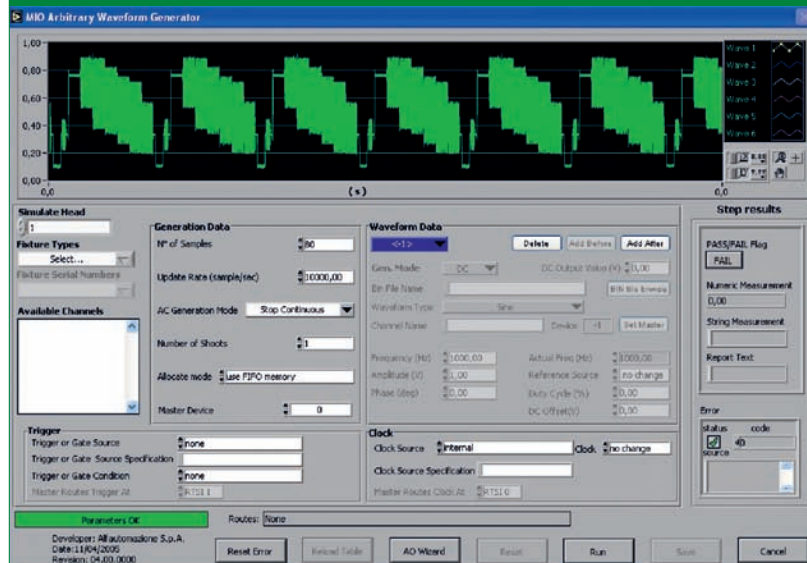
## ■ MAIN CHARACTERISTICS

- Highly flexible matrix configuration from high density low frequency to RF
- Industry most accurate measurement instruments
- Wide selection of signal conditioning interfaces
- Test interface to most popular bus technologies (CAN, LIN, MOST, ARINC...)
- Flexible DUT PSU configuration
- Fully integrated Programmable Loads section
- Tilttable fixture receiver design for easy debug and easy maintenance
- High quality fixture connectors with mixed signal and multifunction pins
- Available in 1 or 2 module design
- Fixture compatible to Automatic Board Handler interface
- Interactive Test Step Library software for NI TestStand® based applications
- DUT parallel test and Execution Speed Profiler for higher throughput
- Built-in diagnostic and calibration



## ■ MEASUREMENTS OPTIONS

- Low frequency measurements:
  - Most accurate 7<sup>1</sup>/<sub>2</sub> digit Digital Multi-Meter
  - Analog Waveform Generator up to 16-bit and 200 MS/s sampling
  - Oscilloscope and Waveform Digitizer
  - High Accuracy Source Meter
- High frequency measurements:
  - RF Vector Signal Analyzer up to 2.7GHz
  - RF Vector Signal Generator up to 2.7GHz
- Digital Test:
  - Digital Waveform Generator and Analyzer
  - Programmable voltage up to 100MHz and 64Mb/channel on-board memory
  - Boundary Scan Test option



## World Wide Service and Support

Alfautomazione main customers are multinational corporations and our assembly/test systems are installed around the world. We offers pre- and post-sales support and service from our headquarters in Italy and from our strategically located Sales and Service field offices.

 **Alfautomazione**



Via Cadore, 21  
20035 Lissone (MI) Italy  
ph. +39 039 2435.1  
[www.alfautomazione.com](http://www.alfautomazione.com)  
[sales@alfautomazione.com](mailto:sales@alfautomazione.com)  
[service@alfautomazione.com](mailto:service@alfautomazione.com)

**alfamation** Schaumburg, IL - USA  
[www.alfamationusa.com](http://www.alfamationusa.com)  
[service@alfamationusa.com](mailto:service@alfamationusa.com)

Asian Pacific Service Centre Shenzhen - China  
[service@alfamationusa.com](mailto:service@alfamationusa.com)

Selected partner of  **NATIONAL INSTRUMENTS™**  
Select Alliance Partner

Authorized Agent/Distributor

