

SwitchTest 3000

Automatic Speed & Travel Test Equipment for Medium Voltage Circuit Breakers

SwitchTest 3000 is a Rugged Automated Tester designed to measure, verify and tune the opening/closing gear of medium voltage circuit breakers, in terms of speed and travel. With its high level software SwitchTest 3000 can automatically calculate all the required parameters, compare them with target values and tolerances and generate pass/fail result and complete report. The operator simply has to connect the harness to the circuit breaker and execute closing/opening operations.

■ APPLICATION AREAS

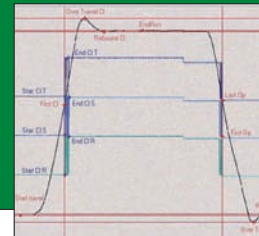
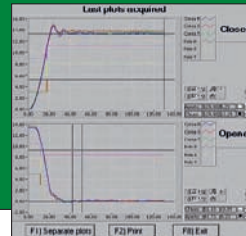
- Medium voltage circuit breakers (vacuum, SF6, ...)

■ FUNCTIONS

- Parameter configurator to define product/process tolerances
- High resolution data acquisition of the travel/time curves
- Automatic calculation of the relevant parameters (travels, timings, speeds)
- Automatic pass/fail result
- Automatic report generator
- Local/Remote database
- User login for access control
- Password required on privileged functions
- Effort measurement

Features & Benefits

- Proven test results
- Reduced testing time
- Ease of use (No skilled operator required)
- Fully automatic test execution
- Support for different types of transducers
- Calibration procedures available
- Designed for production use
- Worldwide support

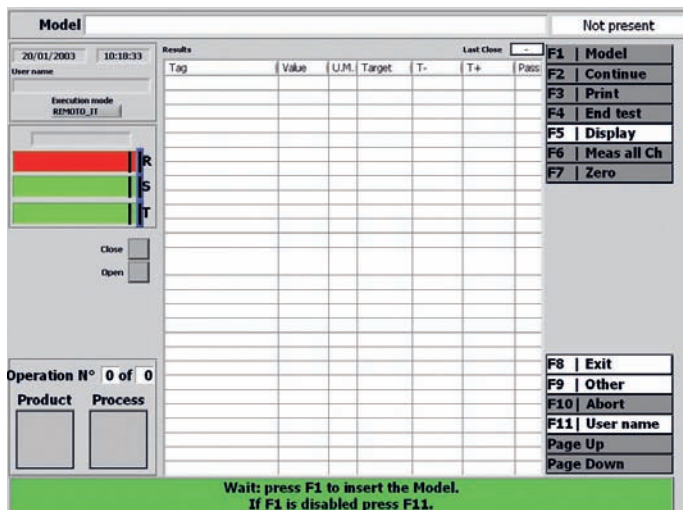


 **Alfautomazione**

www.alfautomazione.com

■ MAIN CHARACTERISTICS

- Parameter configuration database, local or remote
- Parameters defined in terms of target value, product and process tolerances, calculation enabled/disabled
- Automatic acquisition of the opening/closing curves and calculation of the relevant parameters
- Automatic pass/fail result
- Automatic report generator
- Rugged equipment for production lines
- Automatic startup and shutdown
- NI LabView® based application
- Operating system not accessible to operators
- Possibility to display and print acquired curves
- Yield extraction per circuit breaker model and period
- Process quality alarms



■ FEATURES

- Very short testing time (few seconds, depending on the circuit breaker operation)
- Flexible arm for harness support, to fit any production line
- Industrial PC and keyboard
- Backup Hard Disk for immediate restart in case of fail
- UPS for PC protection
- Ethernet plug for factory LAN connection
- Modem plug for remote support
- Integrated color A4 printer
- Bar code reader to input model and serial number
- Equipment mounted on pivoting wheels

■ MEASUREMENTS

- 9 analog input channels (3 for main contacts, 6 for transducers)
- Rotational potentiometer or laser linear transducers
- One or three transducers support
- 50 Ksamples/sec per channel, 12 bits resolution
- 100 µsec accuracy for time, 0,03 degree accuracy for angles
- Optoisolation and filtering to reduce noise and increase accuracy
- Tools and procedures to calibrate time base and angle
- Plug to verify accuracy with a reference external instrument
- Travels, bounces, simultaneity, speeds automatically calculated

World Wide Service and Support

Alfautomazione main customers are multinational corporations and our assembly/test systems are installed around the world. We offers pre- and post-sales support and service from our headquarters in Italy and from our strategically located Sales and Service field offices.

 **Alfautomazione**



Via Cadore, 21
20035 Lissone (MI) Italy
ph. +39 039 2435.1
www.alfautomazione.com
sales@alfautomazione.com
service@alfautomazione.com

alfamation Schaumburg, IL - USA
www.alfamationusa.com
service@alfamationusa.com

Asian Pacific Service Centre Shenzhen - China
service@alfamationusa.com

Selected partner of



Authorized Agent/Distributor